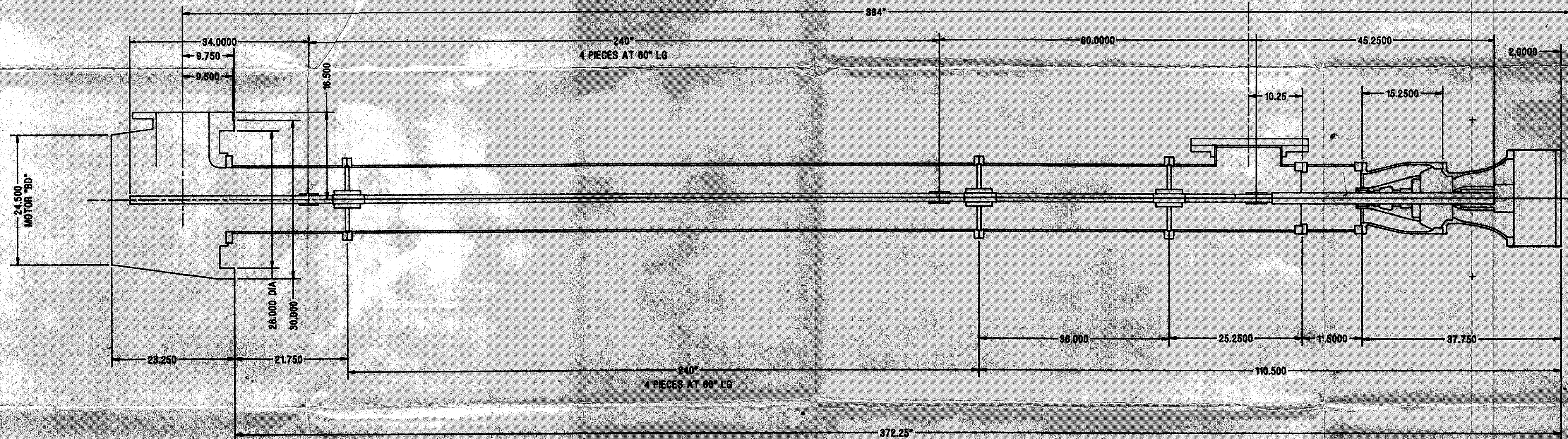
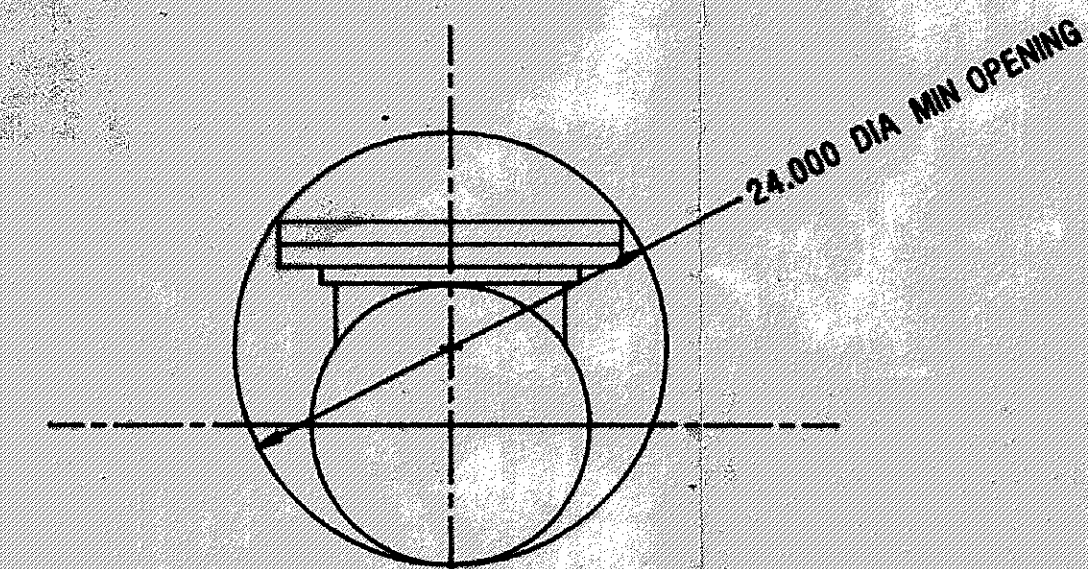
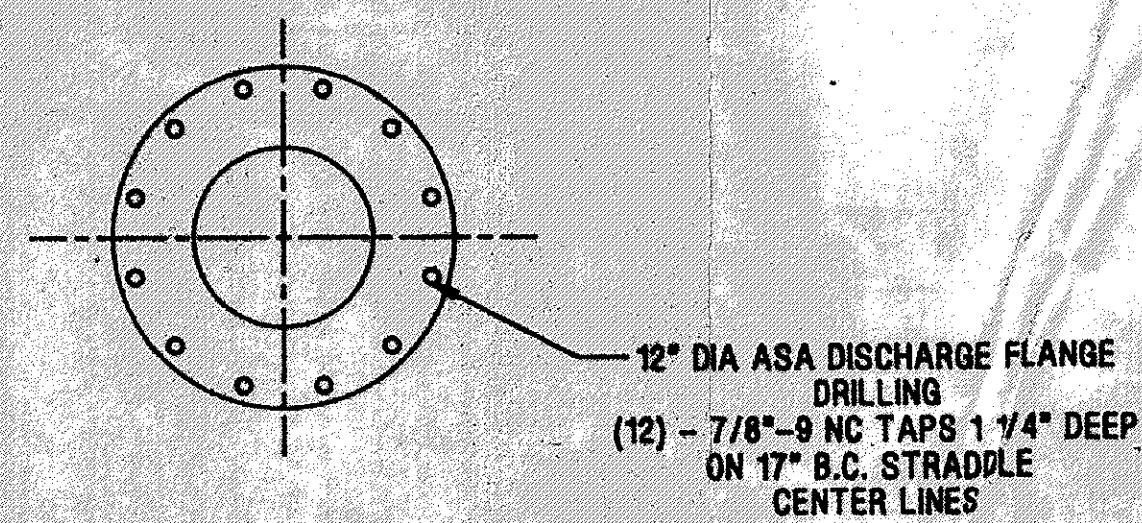


TO REMOVE BOWL ASSEMBLY
IMPORTANT - DO NOT REMOVE IMPELLER, ADJUSTING NUT OR CHANGE IMPELLER SETTING.

1. REMOVE BASKET STRAINER
2. REMOVE BLANK FLANGE COVER
3. ATTACH MECHANICAL LIFTS ("COME-ALONG" OR SIMILAR DEVICE) TO COLUMN PIPE AND BOWL ASSEMBLY.
4. LOOSEN THE SHAFT COUPLING JOINT BY PLACING ONE PIPE WRENCH ON THE IMPELLER SHAFT AND ANOTHER PIPE WRENCH ON THE SHAFT COUPLING. AFTER BREAKING THE JOINT LOOSE (LEFT HAND THREADS), THREAD THE SHAFT COUPLING ONTO THE BOTTOM LINE SHAFT UNTIL IT CLEARS THE IMPELLER SHAFT.
5. WHILE THE BOWL ASSEMBLY IS BEING SUPPORTED BY THE LIFTS REMOVE THE TEN 3/4" CAP SCREWS FROM THE COLUMN JOINT JUST BELOW THE ACCESS OPENING. LOWER THE BOWL ASSEMBLY GENTLY TO THE PIT FLOOR.

TO ADD ANOTHER STAGE TO THE BOWL ASSEMBLY

1. REMOVE AND DISCARD THE BOTTOM SECTION OF COLUMN PIPE (1 1/2" LG).
2. REMOVE THE DISCHARGE BOWL.
3. ADD THE INTERMEDIATE STAGE ASSEMBLY. (USE AN ASSEMBLY TOOL TO LOCK THE SHAFT WHILE INSTALLING THE IMPELLER.)
4. REINSTALL THE DISCHARGE BOWL AND REATTACH THE BOWL ASSEMBLY IN REVERSE ORDER OF BOWL REMOVAL INSTRUCTIONS.



150 HP MAX AT 2 STAGE
 1 1/2\"/>

REVISED 11/10/92, M.L.C. 4 PICES AT 60\"/>

REVISED 11/10/92, M.L.C. 11 1/2\"/>

NEPOLEON RAW WATER INTAKE FACILITY

R & BEER CORP.
 P.O. 15280
 S.O. C059048

This drawing is the property of the DEMING DIV. OF CRANE CO. and is loaned to your company for use on the project specified. It is to be returned to the DEMING DIV. OF CRANE CO. upon request.

PART NO.	CASTING Wt.	MACHINE Wt.
R. COST NO.	MODEL 4771	SIZE XH14E
SYMBOL NO.	TITLE TURBINE W/MINE DISCONNECT	
MAT'L.	DEMING DIVISION CRANE CO. MADE IN U.S.A.	
ISSUE CHG.	SCALE 3/32\"/>	
CHANGE	DRAWN BY MLC	DATE OF ISSUE DEC 28 1992
DATE	DATE 11/10/92	DESTROY ALL PREVIOUS PRINTS
BY	CHK'D BY	DRAWING NO. A001254708